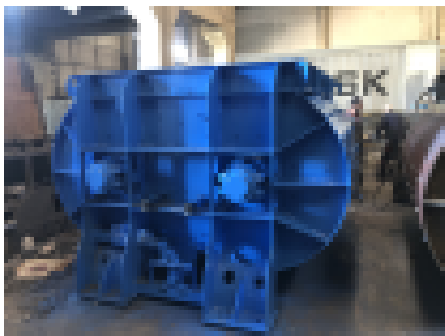




We moved to our new address in Tekirdag / Corlu. CONMACH is now located at 105 Ali Osman Celebi Boulevard, Republican quarter, and continues production in the factory premises, with an interior area of 5500 m2.



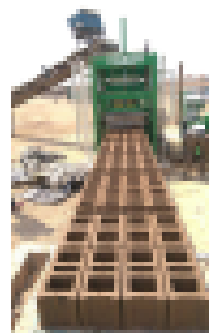
Mobile concrete plant MobKing-60 started production in the city of Sikasso.



Mobile concrete plant "mobking-100" was delivered to the Republic of Yemen.

BlockKing-20 MD Concrete Block Making (Moulding) Machine manufacturing process was completed in our factory and transported to be delivered to the customer. After shipping by sea, the Concrete paving stones making machine will be used by a Turkish company in Abuja, Nigeria for the production of concrete block, concrete paving stone, concrete curbstone, concrete interlocking pavers.

Our company, which exports Automatic Concrete Block Making Machines, Automatic Concrete Paving Moulding Machines, Automatic Concrete Curbstone Making Machines, presents its products to its customers in six stages. Our design work is developed by engineers; Production of mechanical engineering, Hydraulic production, Electrical and automatic works, Application of primers and paints. Finally, the assembly and installation is carried out by our technical support service in accordance with the requirements of the customer in the area where the machine will be located. Our machines differ in power from other machines. For example, our both fully automatic and semi automatic block making machines are designed to meet the needs of the customer.

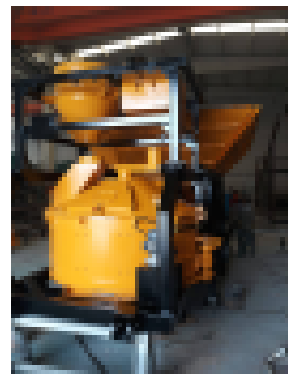
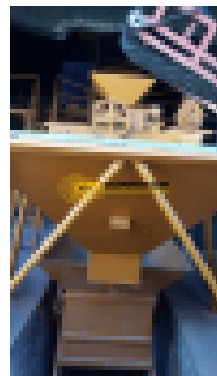


# CONMACH MOVED TO ITS NEW LOCATION.

For more than ten years, our company engaged in the production and export of concrete block making machines, concrete paving block machines, concrete parparing machines, concrete pipe making machines, concrete manhole making machines, compact concrete batching plant, mobile concrete batching plants, stationary concrete batching plants, concrete mixers, concrete batching plant automation systems, crushing plants and screeners.



We moved to our new address in Tekirdag / Corlu. CONMACH is now located at 105 Ali Osman Celebi Boulevard, Republican quarter, and continues production in the factory premises, with an interior area of 5500 m2. Our company, which strives to improve quality by producing equipment for the production of concrete block making machines, concrete paving block machines, concrete parparing machines, concrete pipe making machines, concrete manhole making machines, compact concrete batching plant, mobile concrete batching plants, stationary concrete batching plants, concrete mixers, concrete batching plant automation systems, crushing plants and screeners, as well as the production of spare parts, meets all customer requests.



CONMACH is an engineering company that focuses on research and development in the field of mechanical engineering. Mechanical engineers, electrical engineers, mechanics and technicians are working hard and continue to develop their new projects in Corlu region. A team of professionals works hard to improve the quality of CONMACH machines and increase its competitiveness.

After we visited the new factory, the Director of CONMACH, MEHMET OFLAZ, shared his thoughts about the future works. We share an interview with Mr. Mehmet Oflaz with our readers.

After we visited the new factory, the Director of CONMACH, MEHMET OFLAZ, shared his thoughts about the future works. We share an interview with Mr. Mehmet Oflaz with our readers.

**CONMACH BLOG:** Mr Oflaz, first of all, congratulations. The road that stretches from Ikitelli OSB to Corlu, what would you like to tell us?

**MEHMET OFLAZ:** Thank you. Believe me, I don't know what to say and where to start, I'm very happy. We have achieved this happiness, this success together with all our employees and clients. We have gained the trust of customers by creating high quality equipment, we have made every effort to achieve excellence. By saying that we will be the architect of the first and best, we have always offered consistent quality all over the world. We continuously work for the happiness of our customers, respecting all our competitors. Thus began our journey from Ikitelli OSB to Tekirdag / Corlu.

**CONMACH BLOG:** Could you tell us a little more about your journey?

**MEHMET OFLAZ:** Mehmet Oflaz: Of course, we have also worked hard at Ikitelli OSB for many years. Over time, we started to run out of space. We had problems with the number of accepted orders and simultaneous production. The lack of a production site, the inability to provide decent working conditions for our employees, this led us to think about finding a wider production site. Our problems were resolved when we decided to move our factory in Tekirdag / Corlu to a 5500 m<sup>2</sup> factory.

### **Our seedlings are breaking through the soil.**

**CONMACH BLOG:** what are the factors that influenced your roadmap?

**MEHMET OFLAZ:** First of all, I thank you for your question. I would like to point out right away that our road map is in the form of a circle. It represents the planet on which we live, our world. If you look at the CONMACH Machinery logo, you will notice that it is the world. We are a company that has been operating for a quarter of a century, which produces and exports construction equipments. We have planted our seedlings all over the world, taking root year after year. Our concrete block making machines, concrete paving block machines, concrete parparing machines, concrete pipe making machines, concrete manhole making machines, compact concrete batching plant, mobile concrete batching plants, stationary concrete batching plants, concrete mixers, concrete batching plant automation systems, crushing plants and screeners are rooted all over the world. These are the factors that made up our path of development.

**CONMACH BLOG:** what are you going to do to renovate your machines in a new place?

**MEHMET OFLAZ:** We will take quality to the top for our

customers. The main key to success is that we value our employees, the positive energy that our employees fill the company with. I think that we will be able to take root in the computing field around the world.

**CONMACH BLOG:** What would you like to say to us last?

**MEHMET OFLAZ:** We have come to the end of a difficult exam. (laughter) the marathon that started when I was a student continues. (laughter in the audience) We have been operating in the engineering sector for a quarter of a century. We have exported our equipments to countries such as Nigeria, Saudi Arabia, Palestine, Yemen, Iraq, Jamaica, Republic of Mali, Democratic Republic of the Congo, Ethiopia, Gambia, Ghana, Zambia, Rwanda, Somalia, Egypt. Many more mills got acquainted with our concrete block making machines, concrete paving block machines, concrete parparing machines, concrete pipe making machines, concrete manhole making machines, compact concrete batching plant, mobile concrete batching plants, stationary concrete batching plants, concrete mixers, concrete batching plant automation systems, crushing plants and screeners etc. We will continue our production and export, carrying out production at our plant in Tekirdag / Corlu



BlockKing-20 MD Concrete Block (briquette) Machine manufacturing process was completed in our factory and transported to be delivered to the customer. After shipping by sea, the concrete paving machine will be used by a Turkish company in Abuja, Nigeria for the production of briquettes, paving stones and blocks. The customer has

The customer has impressed with the quality of Conmach machinery of the products that will be produced by the machine. The concrete briquette mould and concrete Parquet mould of different measurement were processed from wear-resistant metal sheet plates and laser

cutting benches and then installed. Concrete briquette machine, concrete paving machine and concrete pipe machine moulds are made in our factory in accordance with the standards and by using best materials

On the other hand, the 0,5 m3 single shaft mixer, conveyor

belts, trolleys, block moulds, interlocking paving moulds, curbstone moulds and production pallets that make up the machine components were produced in our own facilities with Conmach quality and guarantee and sent to Nigeria together with the concrete briquette machine. The mixer, conveyor belts, block

moulds, interlocking paving moulds, curbstone moulds and trolleys were designed in accordance with the conditions of use in the open air. The production pallets supplied by our company are made of oak wood and are suitable for long term use.

## **MOBKING-30 STARTED PRODUCTION IN NIGERIA/ ENUGU**



Mehmet Oflaz oversaw the installation and operation of the mobile concrete batching plant MobKing 30, visited the construction site located in Enugu, along with an official of GTTERRACOM, a representative firm. After the meeting, which took place on the construction site, Oflaz took part in various events to strengthen and evaluate relationships with clients located in different regions of the country.

On December 4, 2018, the 30 MobKing series that we completed at our Istanbul / Ikitelli factory was shipped to a buyer located in Nigeria by sea. Ersin Gokce, who is responsible for the automation system, flew to Nigeria with the company's Director, Mehmet Oflaz, to install the concrete batching plant.

"We will continue to produce stationary concrete plant, mobile concrete plants, compact concrete plants, mixers, concrete block and paving block machines, concrete pipe machines and spare parts to meet all customer requests," said Oflaz, the Chairman of CONMACH, who shared his impressions with us after a five - day visit to Nigeria.



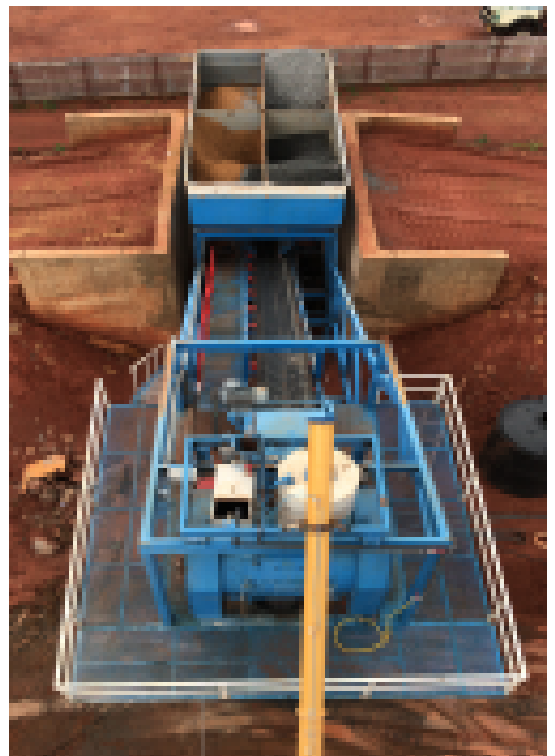
# Mobile Concrete Batching Plant MobKing-60 started production in the city of Sikasso.



The installation of the mobile concrete plant MobKing-60, sent to the Republic of Mali along with its spare parts, has been completed in the city of Sikasso. The machine was installed on-site by CONMACH mechanics. The mobile concrete batching plant with a  $4 \times 10 \text{ m}^3$  bunker, with a capacity of  $60 \text{ m}^3 / \text{h}$ , has a  $1 \text{ m}^3$  concrete mixing capacity. The installation of concrete batching plant with a single-shaft mixer was completed after the installation of a 75-ton cement silo.

Technician Abdullah Yilmaz, who evaluated his work during the installation phase, said: "We have successfully completed the installation of our machine. Thank you to our Malian friends who support us during the installation stage and participate in the work. We provided them with information about the mobile concrete batching plant Mobking-60. Using the automation system together with the operator, we jointly controlled the operation of the mobile concrete batching plant on the production site. Our machine continues production, working without problems. Those of us who perform the installation also experience great joy as we contribute to the production, " he said.

After Conmach technicians completed the installation of the MobKing-60 mobile concrete plant, they went to install the recently shipped mobile concrete batching plant, stationary concrete batching plant, compact concrete batching plant, mixers and silos, and operator training.



Concrete Blocks Machines, Briquettes, Pavers and Parpaing are widely used equipment on construction sites. It is designed to optimally improve the quality of content. These machines are equipment of compact design. It consists of durable and unique building materials. Conmach company exports construction equipment to Israel, Zambia, Georgia, Gambia, Palestine, Nigeria, Uganda, Rwanda, Ghana, Kenya, Gabon, Somalia, Democratic Republic of Congo, Iraq, Ethiopia, Zambia, Libya, Saudi Arabia, Afghanistan, Pakistan, Syria, Iraq, Jamaica, Guyana, Fiji and other countries.



## **We produce concrete block making machines that will change your imagination.**

Among the suppliers in Turkey of Concrete block and pavers machines, conveyor belts, mobile concrete batching plants, mixers, stationary concrete batching plants, concrete pipes machines, concrete manhole machines, concrete rings, pumice Crushers, molds Conmach Machinery occupies a worthy place. Conmach company, engaged in the production and export of machines with a professional team and staff, provides services in the engineering of the highest class. Conmach Machinery, which serves a wide audience in the industry under the motto "Quality matters", is one of the international companies working with the consideration of all the needs of customers.

Conmach develops individual projects for its clients. Molds for blocks, molds for pavers, are one of these components of this type of equipment. On the other hand, customized designs of machines and other construction equipment you need are also available. All our exported equipment is patented by our company. We have a range of automatic, semi-automatic and manual machines. The Conmach brand produces various types of construction equipment. These are Concrete blocks and pavers machines, Stationary concrete plants, mobile concrete plants, compact concrete batching plants, concrete pipes machines and concrete manhole machines, etc





Our team works by paying attention to details. The quality of the product is guaranteed by the talented and experienced team, as well as modern equipment. Our work is focused on customer needs. ISO 9001 quality standard, Spare parts supply, 24/7 Technical support and installation Service, Repair and service. Wide logistic network, Responsibility to the environment, Compliance with universal standard, Focus on research and development, Professional team

## **Customer satisfaction**

The main goal of our company is to ensure customer satisfaction after the production and export of the concrete blocks and pavers machines. We are working on the production of concrete blocks and pavers machines that will change the way our customers look at construction.

## **Maintenance - Spare parts**

We serve our customers and provide technical support 24/7, as well as produce and export spare parts for concrete paving machines.

The concrete block machines that we produce have a Conmach guarantee.

## **Delivery on time**

The commercial obligations that we have to our customers are the most important point in the work of our company. We always deliver the machines within the specified time frame

**Individual** solutions for customers in the production of concrete block machine.

# Mobile Concrete Plant "Mobking-100" was delivered to the Republic of Yemen.



Conmach Machinery, which continues its production activities at its factory Corlu, Tekirdag, is engaged in the import, export and production of concrete blocks making machines, concrete paving Stones making machines, mobile concrete batching plants, compact concrete batching plants, stationary concrete batching plants, mixers, silos, concrete pipes making machines etc.

From a series of construction machines produced by Conmach Machinery, mobking-100 mobile concrete batching plant was produced and shipped to a buyer in one of the Middle East countries, the Republic of Yemen. The mobile concrete batching plant has a horizontal type, a mobile silo and a capacity of  $100 \text{ m}^3 / \text{h}$ , a conveyor belt, a tween shaft mixer with a capacity of  $2 \text{ m}^3$ .

When the MobKing-100 mobile concrete batching plant reaches the Republic of Yemen, installation, Assembly, preparation and first production will be carried out by Conmach mechanics. Post-Assembly operator training and exchange of necessary information will be conducted during the first production test by a technician so that the mobile concrete batching plant can start production.





Molds for concrete pipes are work requiring a professional team and personnel. Our company prefers turning and press options in the manufacture of these molds. Warranty and Quality Conmach knows no bounds. Our company, which has a wide range of different models, has taken its place in the "Concrete Pipe Machine" manufacturing sector. The length and capacity required by our customers are taken into account in production. The smallest capacity of our machines is from 150 to 3600 mm, and the length is from 1000 to 3000 mm. Machine for the production of large concrete pipes with a diameter of 300 mm. The most popular machines are 1200, 1500 and 2000 machine models.

## PALESTINE CONCRETE PIPE MOLD EXPORT

The concrete pipe mould, which production was completed, was transported by sea route. The use of 40 FT - HC - wide containers for shipping was preferred. Conmach machinery; concrete plants, concrete briquettes and parquet machines, crushers, concrete Pipe making machines, concrete mobile batching plants and spare parts for these machines, supply and manufacturing molds all are performed in our company . Conmach Machine , which exports manufacturing construction machines, continues to respond to the demands and needs of its customers by adding another one to its machinery exports.

For the concrete pipe machine installed in Palestine, Ø2000 h:2500 wet type (wet) Concrete Pipe mold was produced by Conmach machine and its been exported to Palestine and took place. Our Palestinian customer, who visited our production facilities on site during the manufacturing phase, expressed his satisfaction and said he hoped to work with us on our new projects.



Model	Capacity (m³/h)	Bunker Capacity (m³)	Mixer Capacity (lt)	Mixer Type
MobKing-15	15	2 x 10 (20)	350 / 200	Pan / Single Shaft
MobKing-30	30	4 x 5 (20)	750 / 500	Pan / Single Shaft
MobKing-60	50	4 x 10 or 3 x 13	3.000 / 2.000	Pan / Single Shaft
MobKing-60	60	4 x 20 (80)	3.000 / 2.000	Pan / Single Shaft
MobKing-100	100	4 x 15 (60)	3.000 / 2.000	Twin Shaft
MobKing-105	105	4 x 30 (120)	3.000 / 2.000	Twin Shaft
MobKing-120	120	4 x 15 (60)	4.500 / 3.000	Twin Shaft
MobKing-135	135	4 x 30 (120)	4.500 / 3.000	Twin Shaft

### Concrete Batching Plant Model / Capacity



Capacity (units/shift)	20 x 20 x 40 cm (8") Block	15 x 20 x 40 cm (6") Block	10 x 20 x 40 cm (4") Block	I type 10x20 Paving Stone	Double T type Paving Stone
BlockKing-18F	5.000	6.000	9.000	27.500	21.000
BlockKing-20F	8.000	10.000	14.000	35.000	22.000
BlockKing-25F	10.000	12.000	18.000	44.000	27.500
BlockKing-30F	12.000	16.000	22.000	46.000	33.000
BlockKing-36F	12.000	16.000	22.000	60.000	40.000
BlockKing-42F	18.000	24.000	33.000	72.500	46.000

## Concrete Block Making Machines with Automatic Weighing System



Capacity	220x20x40cm (8") Block	15x20x40cm (6") Block	10x20x40cm (4") Block	I type 10 x 20 cm Paving Stone	Double T type Paving Stone
BlockKing-9MS	3.000	4.000	6.000	13.500	10.000
BlockKing-12M	4.000	5.000	7.000	18.000	13.500
BlockKing-18M	5.000	6.000	9.000	28.000	20.250
BlockKing-20M	8.000	10.000	14.000	36.000	22.500
BlockKing-25M	10.000	12.000	18.000	45.000	28.000
BlockKing-30M	12.000	16.000	22.000	47.250	33.750
BlockKing-36M	12.000	16.000	22.000	60.750	40.500
BlockKing-42M	18.000	24.000	33.000	74.250	47.250

## Concrete Block Making Machines without Automatic Weighing System



# CONMACH

## DECLARATION ON COVID-19

To our clients, employees and friends  
The health and safety of our employees, customers and friends is a priority for us. The COVID-19 pandemic, which intensified in Turkey in March 2019, is challenging our business and our future.

We Conmach, as a company, consider it necessary to inform our customers about our work. To do this, we strictly adhere to all new standards and requirements for occupational health protection adopted by the Ministry of health of the Republic of Turkey and the world health organization (who).

The percentage of COVID-19 cases varies by province, County, and region. Conmach adheres to strict health protection measures at production facilities, adhering to precautionary measures to prevent the spread of the virus.

In our relations with clients, special attention is paid to the rules of social distance, hygiene and the use of masks in communication with customer representatives. If you have any questions about this, regarding our factory and our employees, please contact us.

In the context of the COVID-19 pandemic, our employees work professionally and maintain a social distance 24/7 to ensure

that our customers receive their orders on time.

A number of stringent measures are being implemented in response to the Covid-19 pandemic. We are working to deliver our customers ' orders as soon as possible in accordance with the rules of the contract. If there is a schedule change caused by COVID-19 on the delivery day, we will notify you in advance.

Fighting the covid-19 epidemic is a human duty. In this case, many companies produce the necessary products. Conmach machinery works to help its customers produce mission-critical products. We will answer all your needs. Spare parts, molds, conveyor belt, mixer and other machine components are some of the products to be delivered first. If there are no travel restrictions, our maintenance team will be present when installing equipment at your facilities. We will do our best to provide support via Internet, video chat, phone, etc

We have many options for solving technical issues to achieve overall success  
Dear customers, please contact us as usual when you need it.

Thank you for your support and trust.



You can contact us by  
visiting our  
social media pages



**MEHMET OFLAZ**

Managing Director & CEO

Cumhuriyet Mahallesi, Ali Osman Çelebi Blv.  
No: 105, 59850 Çorlu/Tekirdağ, Turkey.  
Telephone: +90 (544) 468 75 49  
Whatsapp: +90 (544) 468 75 49  
e-mail: info@conmach.com

### CONCRETE MACHINES

#### Moules et Machines Personnalisés Concrete

Concrete Block & Interlock Making Machines

Concrete Pipe & Manhole Making Machines

Concrete Custom Made Moulds & Machines

Concrete Batching Plantss

[www.conmach.com](http://www.conmach.com) & <https://www.conmachconcretebatchingplants.com>